

THE ENGINE SHED

WHITBY



Nº

1264

B-1

WHITBY

Simply the best Location...

Location, location, location....

That's what the presenters on all the television programmes say and when it comes The Engine Shed that certainly is true, with Whitby Town Centre, Whitby's golden beaches and Church Street amenities all with easy reaching distance.

Originally built to stable horses and carriages for the railway and later the steam locomotives based in Whitby, the grade II listed Engine Shed has been tastefully transformed into 11 luxury one and two bedroom holiday apartments.



Nick Henderson MNAEA MARLA
Hendersons Property Consultants



HENDERSONS



926

25



The Developers' Vision

The developers, Peter and Andrew, who have a reputation for quality, had a clear vision to give the old engine shed the sustainable future it deserved. They have created a unique experience linking to the buildings historic past and by fusing the listed stone building with modern interiors, have transformed the Engine Shed into the holiday venue of choice.

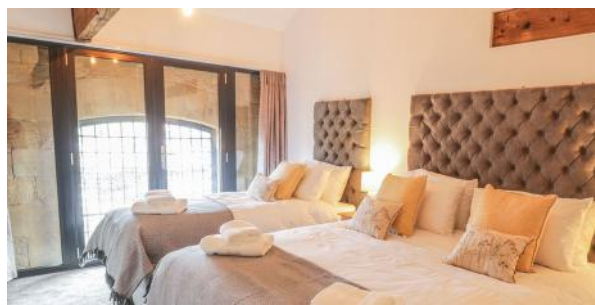
Since it's opening in August 2019, it has been popular for both short and long term stays, hosting visitors such as celebrity chefs, Dave and Si, fondly known as The Hairy Bikers. You can catch their visit on the BBC I-Player during Episode 2 of The Hairy Bikers Go North.

After securing the future of the Engine Shed, Peter and Andrew have similarly transformed the Carlill on Royal Crescent, another of Whitby's historic buildings, a development that was completed in 2022 and saw all apartments sold months before completion.

The Engine Shed



A beautiful collection of apartments in the heart of Whitby, finished to an exceptionally high standard with quality fixtures and fittings throughout.







What is Whitby Famous for?

Well you have the whaling industry, Whitby Goth festival, Dracula, 199 steps, Whitby Abbey, the best fish and chips in the world and simply one of the best tourism hot spots on the Yorkshire Coast. Whitby unspoilt by modern day life still retains all its character and charm which make it so popular with visitors.

A person wearing a striped long-sleeved shirt and purple shorts is walking away from the camera on a wooden pier. A small, light-colored dog is walking alongside them. The pier has a white metal railing. In the background, the ocean stretches to the horizon under a bright blue sky with scattered white clouds. A small white sign is attached to the railing.

What are you waiting for?

Whitby has seen a huge increase in popularity over the last twenty years but recently became the No.1, most in demand seaside town in a recent survey by Rightmove. With people opting for an investment by the sea rather than shares in a FTSE 100!



COASTAL LIVING

There is more to Whitby than the famous 199 steps, Dracula or Captain James Cook.

Whitby over the recent years has become a great place to wine and dine on an evening, from cocktails at Harry's Bar to famous fish & chips at the Magpie or Trenchers.

There is always something going on in Whitby, which now operates an all year round tourism calendar, so where better to invest.



1. Whitby Beach huts
2. View from the East Cliff looking over to the West Cliff and Sandsend beyond
3. A whitby Seagull
4. Historic ruins of Whitby Abbey

Evening Star

Evening Star is a beautiful apartment overlooking Whitby's railway line, which features some amazing steam trains that use the lines during the summer months. Evening Star is a fantastic base for exploring all that Whitby has to offer.

This apartment occupies a first-floor corner plot with views of the station, steam railway and the famous Whitby Abbey from its dual aspect.

Boasting contemporary styling with an open-plan living space combining a kitchen, living and dining area as the hub of the property.

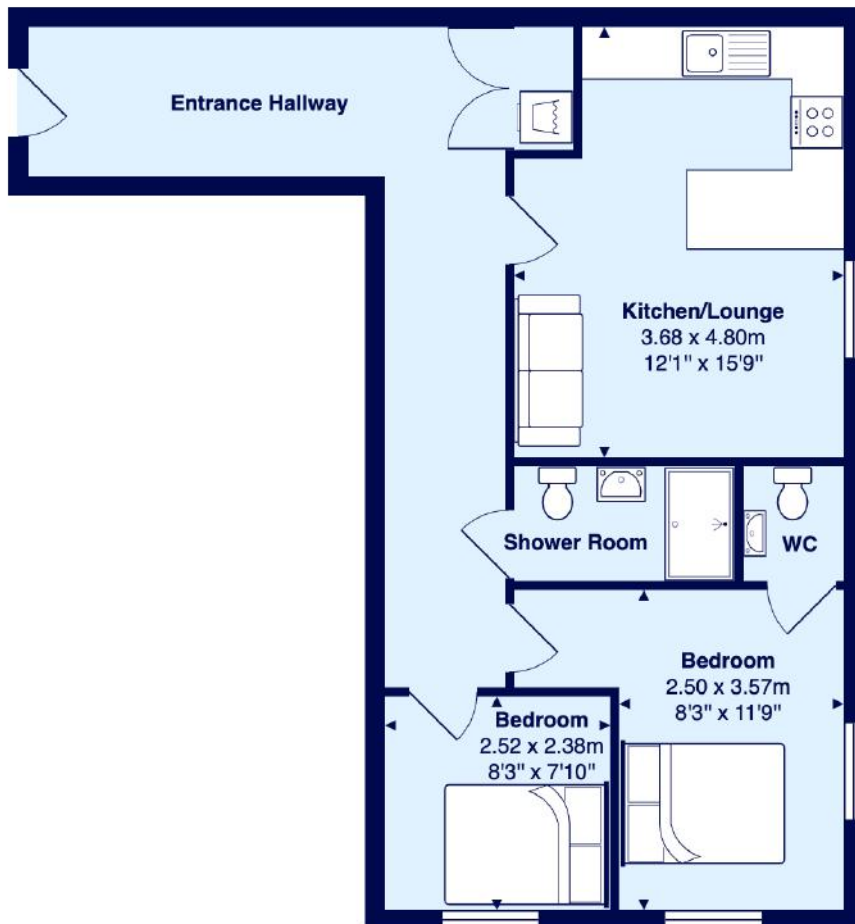
The modern kitchen units are complimented by the glass splash backs, mood lighting, quartz working surfaces and range of integral appliances that are equipped for the most discerning holiday guests.

There is a shower room which boasts a large walk in shower, two tastefully decorated double bedrooms, the master bedroom having the handy addition of an en-suite WC.

The car park is located on the first floor providing under cover parking which is huge bonus in Whitby



Evening Star Floorplan



All measurements are approximate and for display purposes only
© Henderson Property Services (Yorkshire) Ltd

Premier, Transit and Lady Hilda

Premier, Transit and Lady Hilda is a luxurious one bed apartment named after the first three horse draw carriages that ran on the Whitby to Pickering tracks prior to steam trains.

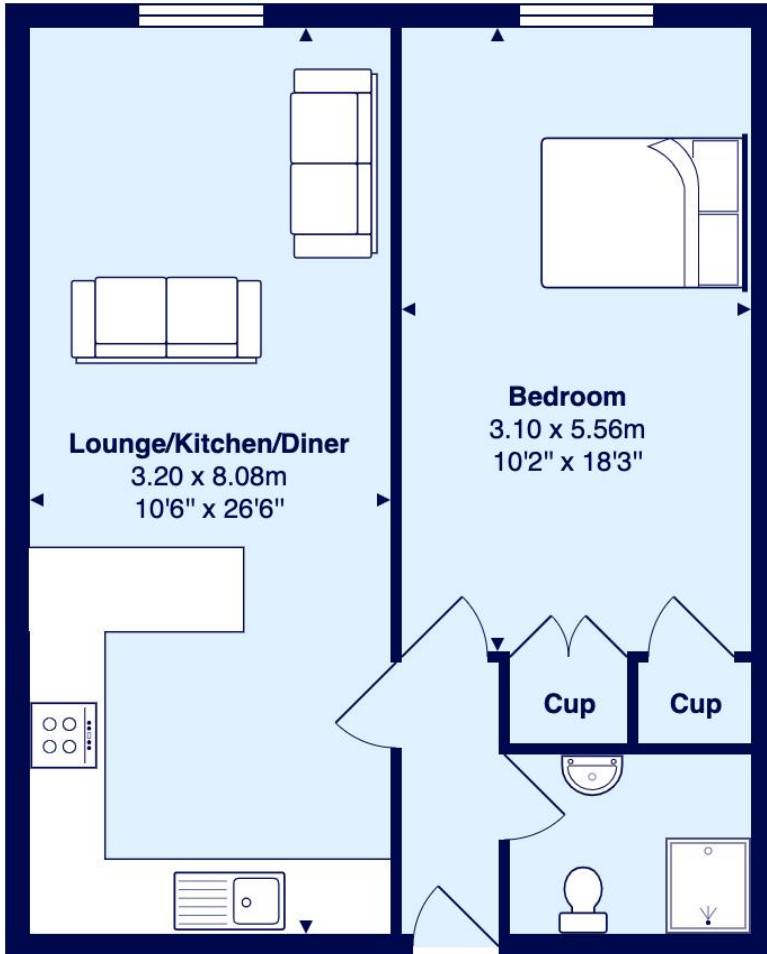
Located within the Engine Shed and overlooking Whitby's steam railway, the Marina and towards the Abbey, the apartment is a perfect opportunity for investors to purchase a modern apartment found within a piece of Whitby's history.

Comprising an open-plan living space combining a kitchen, living and dining room, together with a bedroom and house shower room. The kitchen is well equipped with stylish white units complimented by quartz worktops together with a range of integral appliances.

The bedroom is a huge room, over 18ft long. Both the bedroom and living room feature floor to ceiling glass walls that focuses on the original stonework and wrought iron windows of the building whilst enjoying the views. The contemporary shower room is made up of large walk in shower, w.c and hand basin.



Premier, Transit & Lady Hilda Floorplan



All measurements are approximate and for display purposes only
© Henderson Property Services (Yorkshire) Ltd

George Stephenson

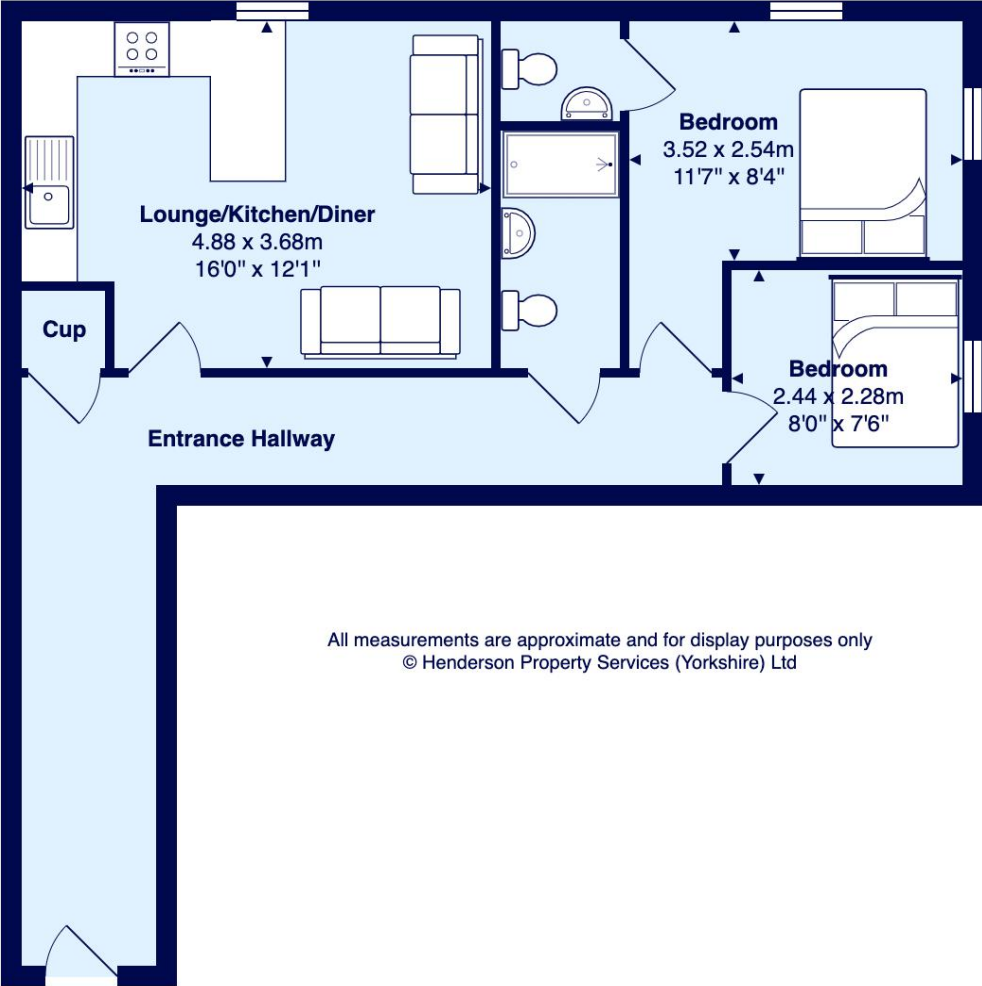
George Stephenson is a two-bed apartment named after one of the engineers who designed the local trainline. Offering an outlook over Whitby's steam railway, this stylish, two bed apartment that sleeps up to 4 is a perfect base to explore the historic fishing port of Whitby.

The apartment occupies the ground floor corner plot and comprises of an open-plan living space combining a kitchen, living and dining room, two double bedrooms, an ensuite just off the master and a house shower room.

The kitchen is well stocked with stylish white and charcoal units complimented with glass splashbacks, quartz worktops and integral appliances. The contemporary shower room is made of a large walk-in shower, w.c. and hand basin



George Stephenson Floorplan



Mallard

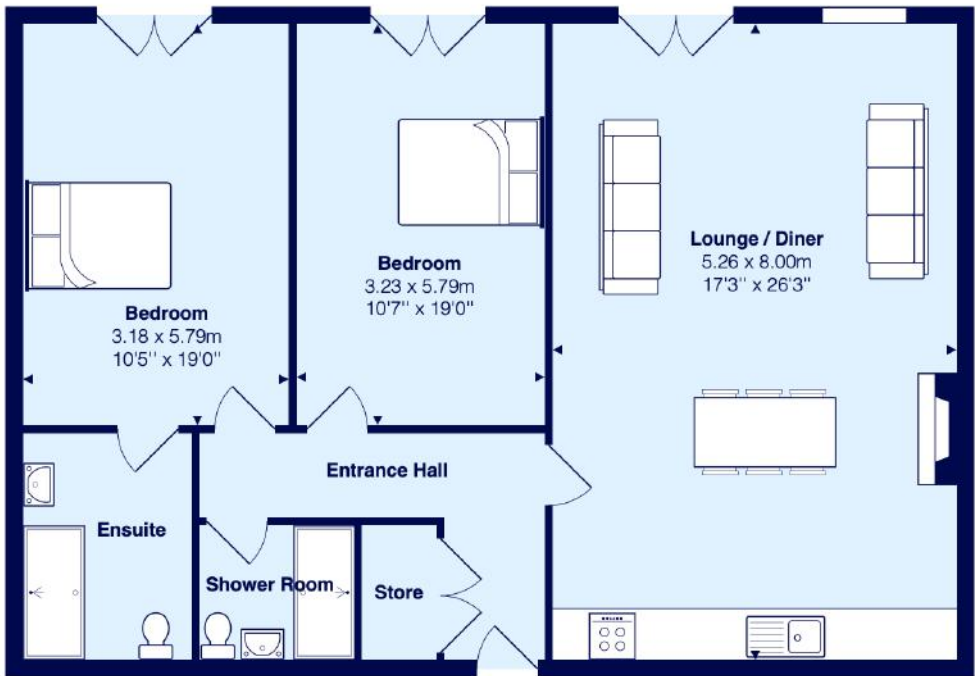
Mallard is a wonderful ground-floor apartment named after the famous record breaking steam train. This two bedroom apartment is a spacious and wonderful retreat boasting contemporary styling with a clever blend of stylish furnishings, which are complemented by the traditional features and a brick fireplace housing a Dimplex electric stove.

The open-plan living space combining a kitchen, living and dining area is the hub of the property. The modern kitchen with glass splash backs, mood lighting, quartz work surfaces and superb appliances add to the feeling of quality throughout, ensuring that you can cook a delicious meal at home before relaxing into your evening, with a Smart TV to keep you entertained.

Completing the interior are two well-presented spacious bedrooms, the master bedroom comprising of a Super-King-Size bed boasting a smart TV and an en-suite, and an additional family bedroom with a Super-King-Size zip and link bed and a single bed.



Mallard Floorplan



All measurements are approximate and for display purposes only
© Henderson Property Services (Yorkshire) Ltd



Flying Scotsman

Named after the famous and record-breaking steam train the Flying Scotsman is a wonderful first-floor apartment in the Engine Shed overlooking Whitby's steam railway. A spacious and contemporary stylish apartment.

The open-plan living space combining a kitchen, living and dining area is the heart of this property and really offers the wow factor with the exposed stone walls, arched windows and wooden beams that date back to the 1840s.

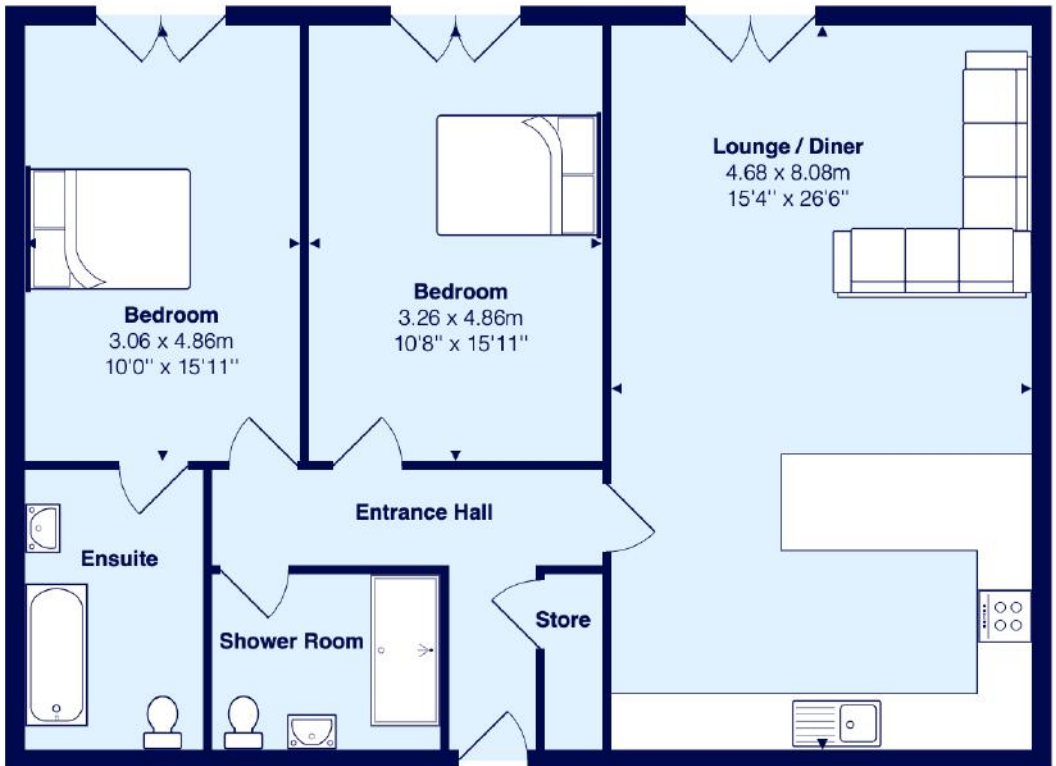
The modern kitchen is complimented by the glass splash backs, mood lighting, quartz work surfaces and superb appliances add to the feeling of quality throughout

Completing the interior are two well-presented spacious bedrooms, the master bedroom comprising of a Super-King-Size bed and en-suite, the second family bedroom offers a Super-King-Size zip and link bed and a single bed.

A stunning apartment that must be viewed to fully appreciate the features that this apartment has to offer.



Flying Scotsman Floorplan



All measurements are approximate and for display purposes only
© Henderson Property Services (Yorkshire) Ltd

Sir Nigel Gresley

Named after the famous steam train and railway engineer, Sir Nigel Gresley is a wonderful two bedroom ground-floor apartment overlooking Whitby's steam railway.

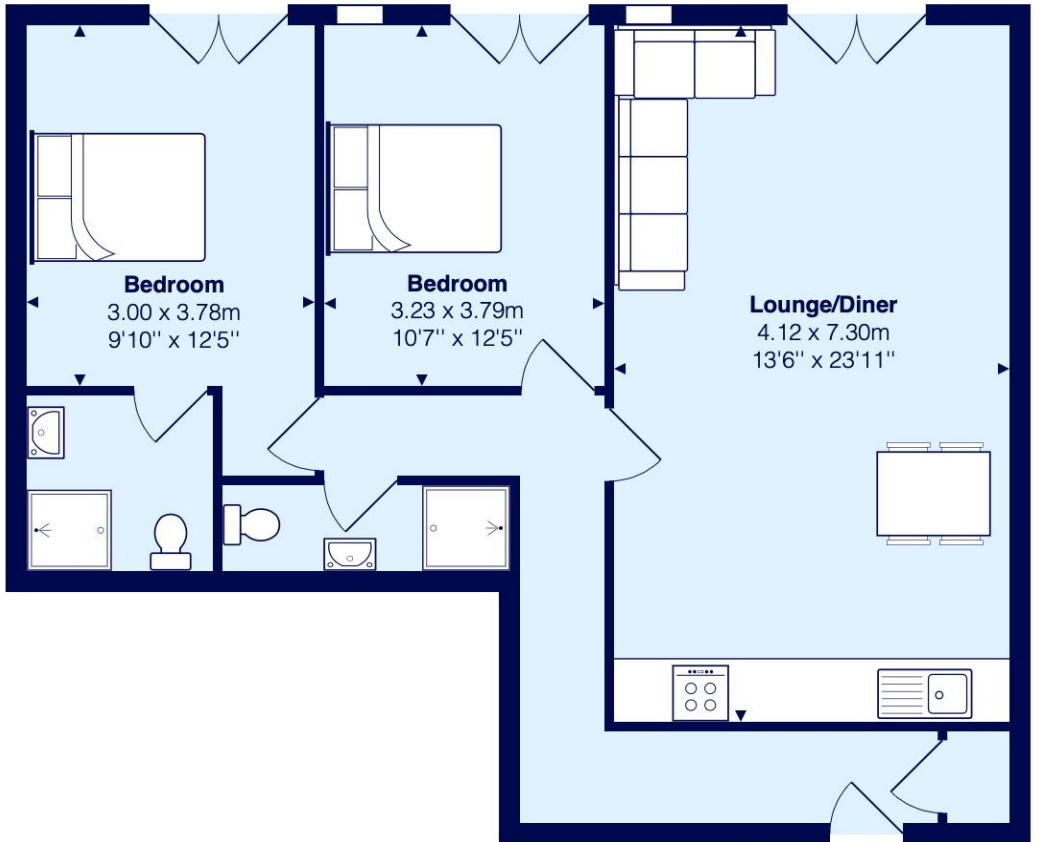
This wonderful retreat boasts contemporary styling with an open-plan living space combining a kitchen, living and dining area as the hub of the property. The living room and both bedrooms feature floor to ceiling glass walls that show-off the original stonework and window grills.

The modern kitchen boasts glass splash backs, mood lighting, quartz work surfaces along with stylish pale blue units and is equipped with a superb range of integral appliances.

Completing the interior are two well-presented spacious bedrooms, and a deluxe shower room with a large walk-in shower, wc, hand basin, LED mirror and heated towel rail. The master bedroom boasts a deluxe en-suite shower room.



Sir Nigel Gresley



All measurements are approximate and for display purposes only
©Henderson Property Services (Yorkshire) Ltd

Repton

Named after the steam train that runs on the North Yorkshire Moors Railway, Repton is an exceptional apartment on the first-floor of the Engine Shed overlooking Whitby's steam railway.

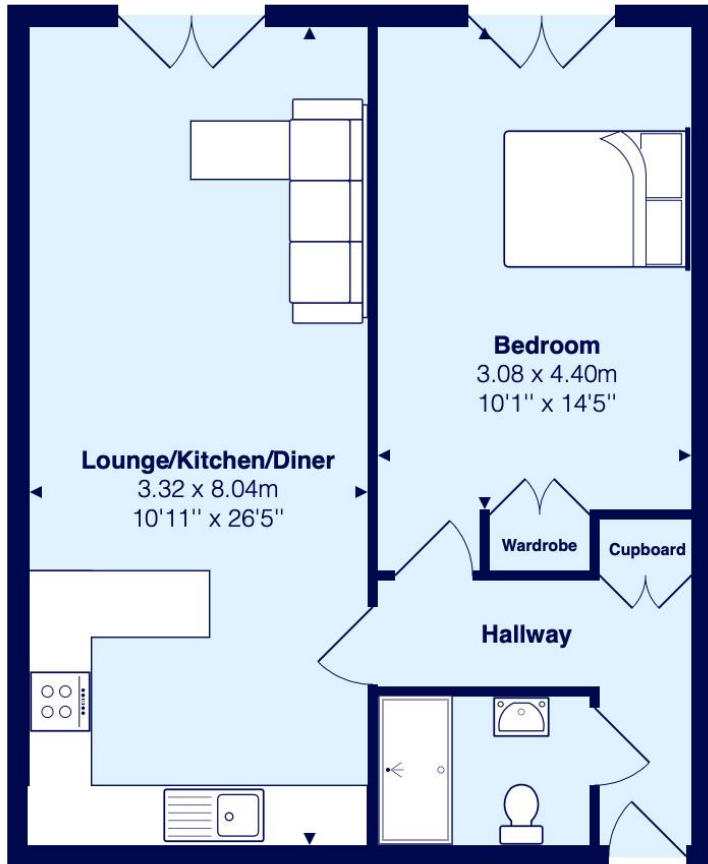
This is a spacious and wonderful retreat boasting contemporary styling with a clever blend of stylish furnishings which are complemented by traditional features and exposed beams. Both the living room and bedroom feature floor to ceiling glass walls that show-off the original stonework and window grills.

The open-plan living space combining a kitchen, living and dining area is the hub of the property. The modern kitchen has a green glass splash back to match the locomotive, mood lighting, quartz work surfaces and superb appliances add to the feeling of quality throughout, ensuring holiday guests can cook a delicious meal at home before relaxing into the evening.

The property benefits from a spacious bedroom and a deluxe shower room with a large walk-in shower, wc, hand basin, LED mirror and heated towel rail.



Repton



All measurements are approximate and for display purposes only
©Henderson Property Services (Yorkshire) Ltd

Blue Peter

Named after the famous steam train, Blue Peter is a wonderful ground-floor apartment overlooking Whitby's steam railway.

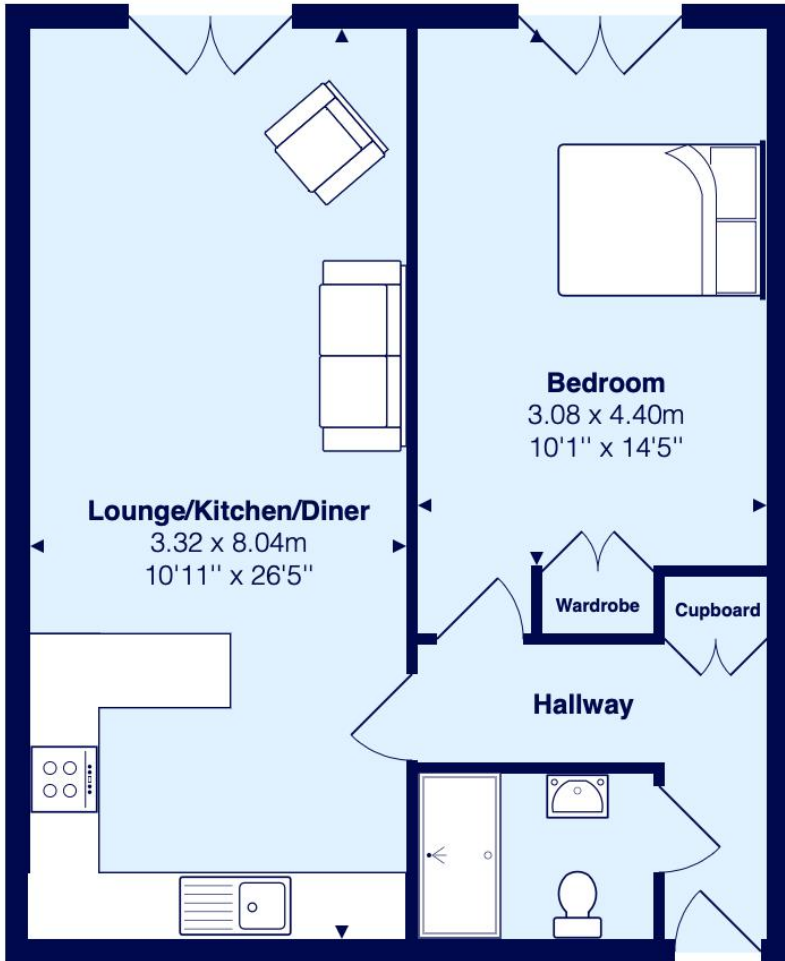
This wonderful retreat boasts contemporary styling with an open-plan living space combining a kitchen, living and dining area as the hub of the property. Both the living room and bedroom feature floor to ceiling glass walls that show-off the original stonework and window grills.

The modern kitchen features blue glass splash backs, mood lighting, quartz work surfaces and superb integral appliances add to the feeling of quality throughout.

The bedroom is very spacious and includes built in wardrobes, perfect storage for holiday guests. The deluxe shower room has a large walk-in shower, wc, hand basin, LED mirror and heated towel rail.



Blue Peter



All measurements are approximate and for display purposes only
©Henderson Property Services (Yorkshire) Ltd

Duchess of Hamilton

Named after the famous steam train, Duchess of Hamilton is an exceptional apartment on the first-floor of the Engine Shed overlooking Whitby's steam railway and is a marvellous base for exploring the coast of Yorkshire.

This is a spacious and wonderful retreat boasting contemporary styling, complemented by traditional features and exposed beams.

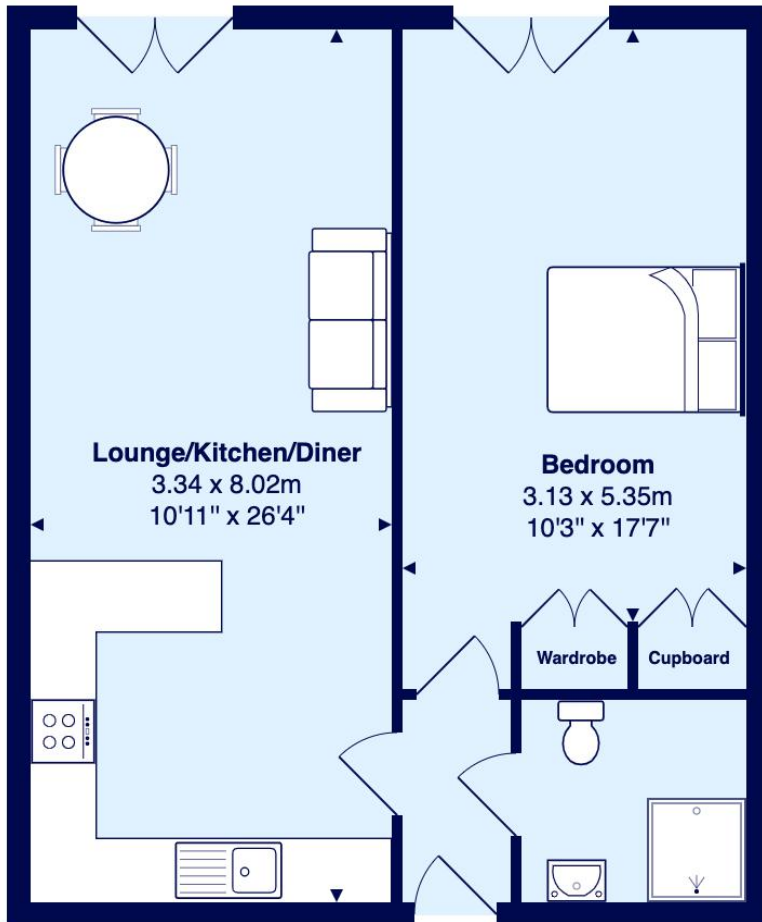
The open-plan living space combining a kitchen, living and dining area is the hub of the property.

The modern kitchen features red glass splash backs, mood lighting and quartz work surfaces add to the feeling of quality throughout and it is equipped with a range of integral appliances appropriate for all holiday guests.

The property benefits from a tastefully decorated large bedroom with plenty of space for guests to store belongings and a deluxe shower room with a large walk-in shower, wc, hand basin, LED mirror and heated towel rail.



Duchess of Hamilton



All measurements are approximate and for display purposes only
©Henderson Property Services (Yorkshire) Ltd

Olton Hall

This superb ground-floor apartment is a charming nod to the Harry Potter films, with the décor enjoying a striking red colour palette to reflect the famous Hogwarts Express.

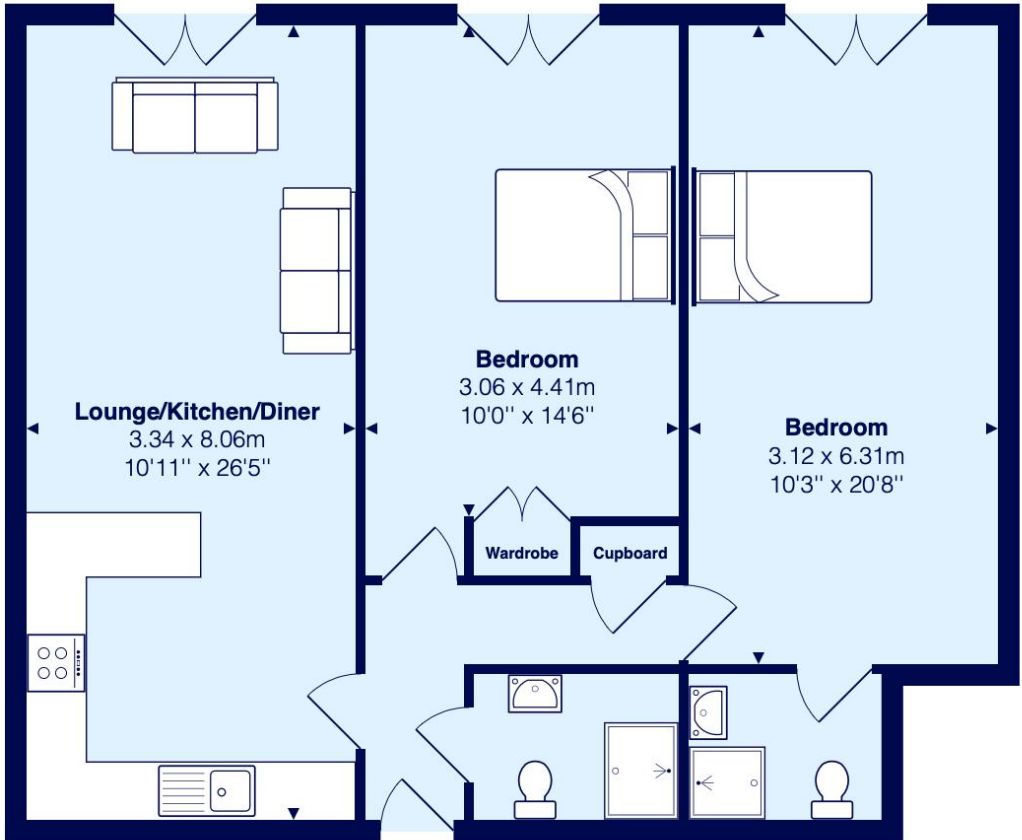
This wonderful retreat boasts contemporary styling with an open-plan living space combining a kitchen, living and dining area as the hub of the property.

The modern kitchen with red glass splash backs, mood lighting, quartz work surfaces and superb appliances add to the feeling of quality throughout.

Completing the interior are two well-presented spacious bedrooms, and a deluxe shower room with a large walk-in shower, wc, hand basin, LED mirror and heated towel rail. The master bedroom boasts a deluxe en-suite shower room.



Olton Hall



All measurements are approximate and for display purposes only
©Henderson Property Services (Yorkshire) Ltd

Tornado

Tornado is a wonderful ground-floor apartment overlooking Whitby's steam railway and is a marvellous base for exploring the coast of Yorkshire with family or friends.

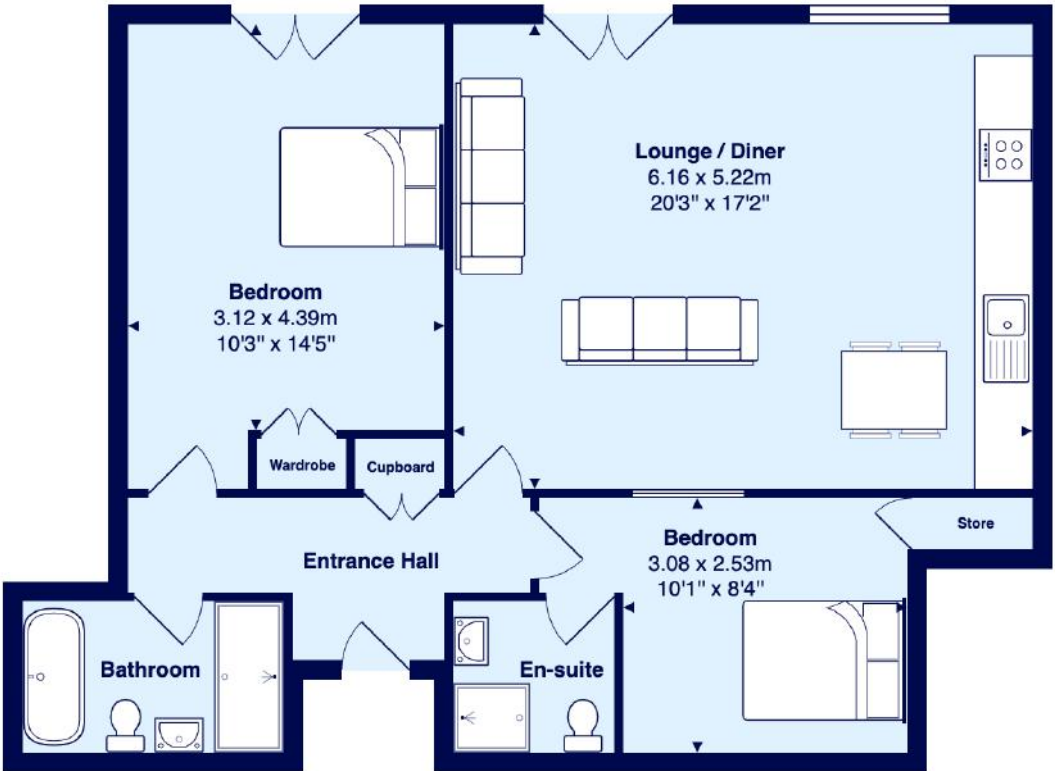
This wonderful two bedroom apartment boasts contemporary styling with an open-plan living space combining a kitchen, living and dining area as the hub of the property. A glass wall reveals the original stone work of the grade II listed building.

The modern kitchen with glass splash backs, mood lighting, quartz work surfaces and superb appliances add to the feeling of quality throughout ensuring that you can cook a delicious meal at home before relaxing into your evening, with a Smart TV to keep you entertained.

Completing the interior are a large family bathroom with a large walk-in shower and a bath, wash basin and w.c. and two well-presented double bedrooms, one with a smart glass window and an en-suite shower room.



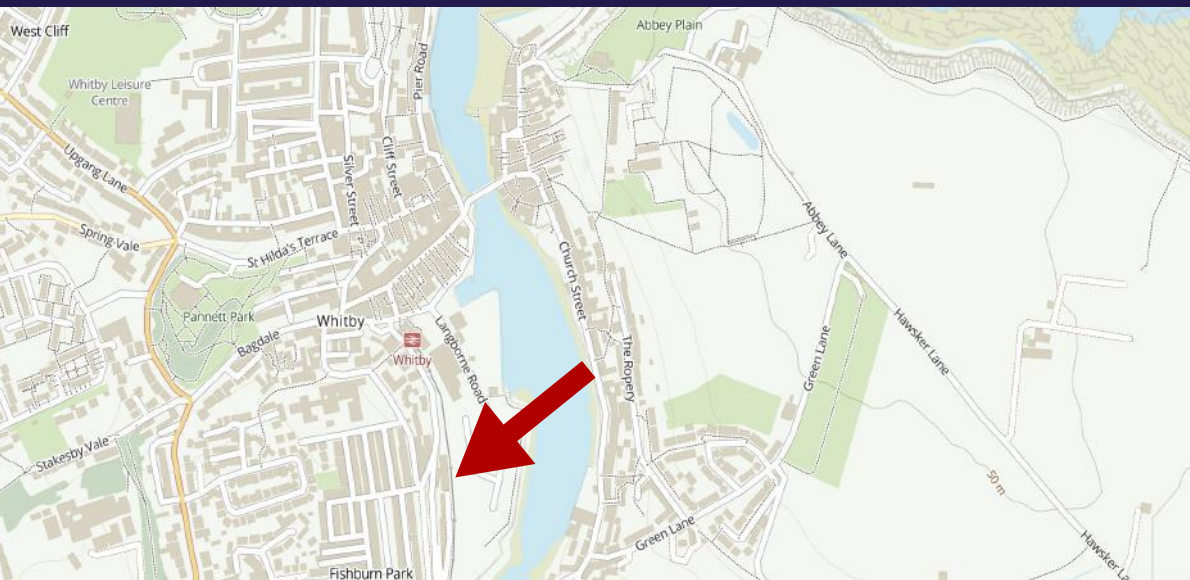
Tornado



All measurements are approximate and for display purposes only
© Henderson Property Services (Yorkshire) Ltd

The perfect property investment

If you are thinking of investing, Whitby certainly should be the top of your list and The Engine Shed at the top of that list. Located in the centre of town, The Engine Shed offers holiday makers exactly what they are looking for, great views, quality fixtures and fittings, easy access to the town centre all from your elegant apartment, as featured on the BBC's Hairy Bikers.



To find out more about these exciting apartments call the office on 01947 602626 or visit myhendersons.co.uk